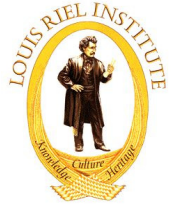


Metis Camping on the Trail:

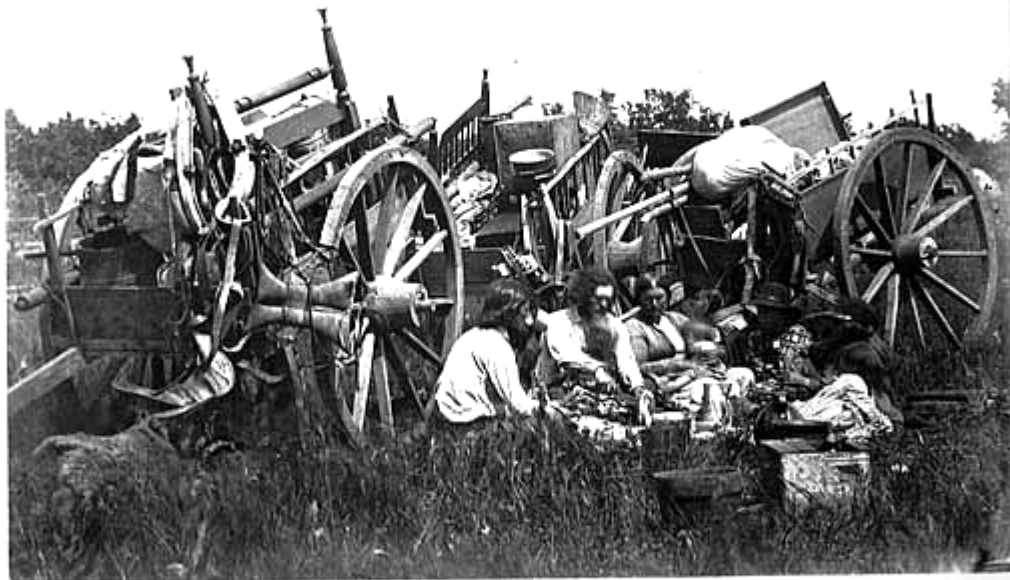
A pictorial essay of Metis cart trains.



Compiled by Lawrence Barkwell
Coordinator of Metis Heritage and History Research
Louis Riel Institute



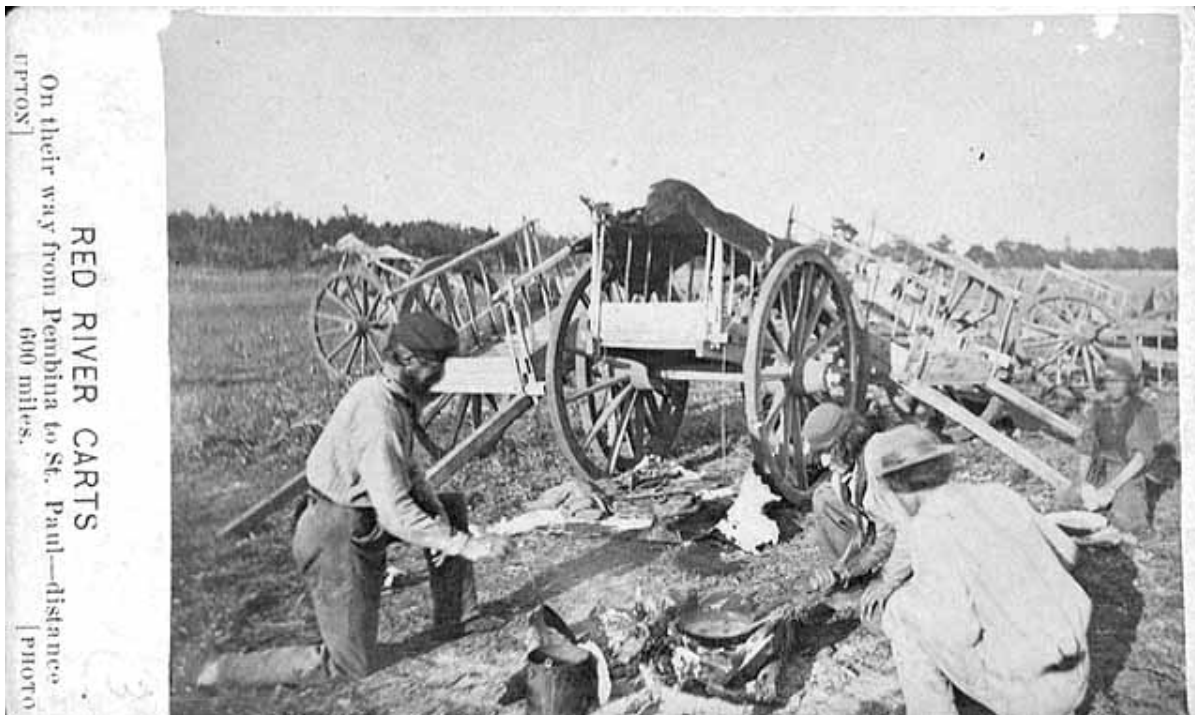
Red River carts and drivers in 1860, MHS Negative no. 28555.



5

RED RIVER CARTS, FROM PEMBINA.
1868.

Red River carts, drivers and family in camp (1858). Photographer: Benjamin Franklin Upton. MHS Negative no. 404



RED RIVER CARTS
On their way from Pembina to St. Paul—distance
600 miles.
UPTON PHOTO



Red River carts and driver in camp (1858). MHS Negative no. 11408



Red River carts in camp (1860). Photographer: Whitney's Gallery.
MHS Negative no. 2011



W. H. ILLINGWORTH
 No. 1341 SEVENTH STREET, ST. PAUL, MINN.

St Paul 1860 Red River Camp. *on Marshall Ave*

Red River trader's camp on Marshall Avenue, St. Paul in 1860; Photographer: William Henry Illingworth (1842-1893), MHS Negative no. 10371.



Red River carts in camp (1860). Photographer: Whitney's Gallery.
MHS Negative no. 2012



Half Breed Camp near Devils Lake Dakota 1865

Ox carts at half-breed camp near Devil's Lake, Dakota Territory (1865). MHS
Negative no. 37945



Red River camp in the "Big Woods Timber" near St. Cloud (1868).
MHS Negative no. 69.



Red River ox cart drivers eating dinner on the prairie (1850). MHS
Negative no. 3069



Red River ox carts from Pembina (1860). Photographer: Whitney's Gallery. MHS
Negative no. 4587